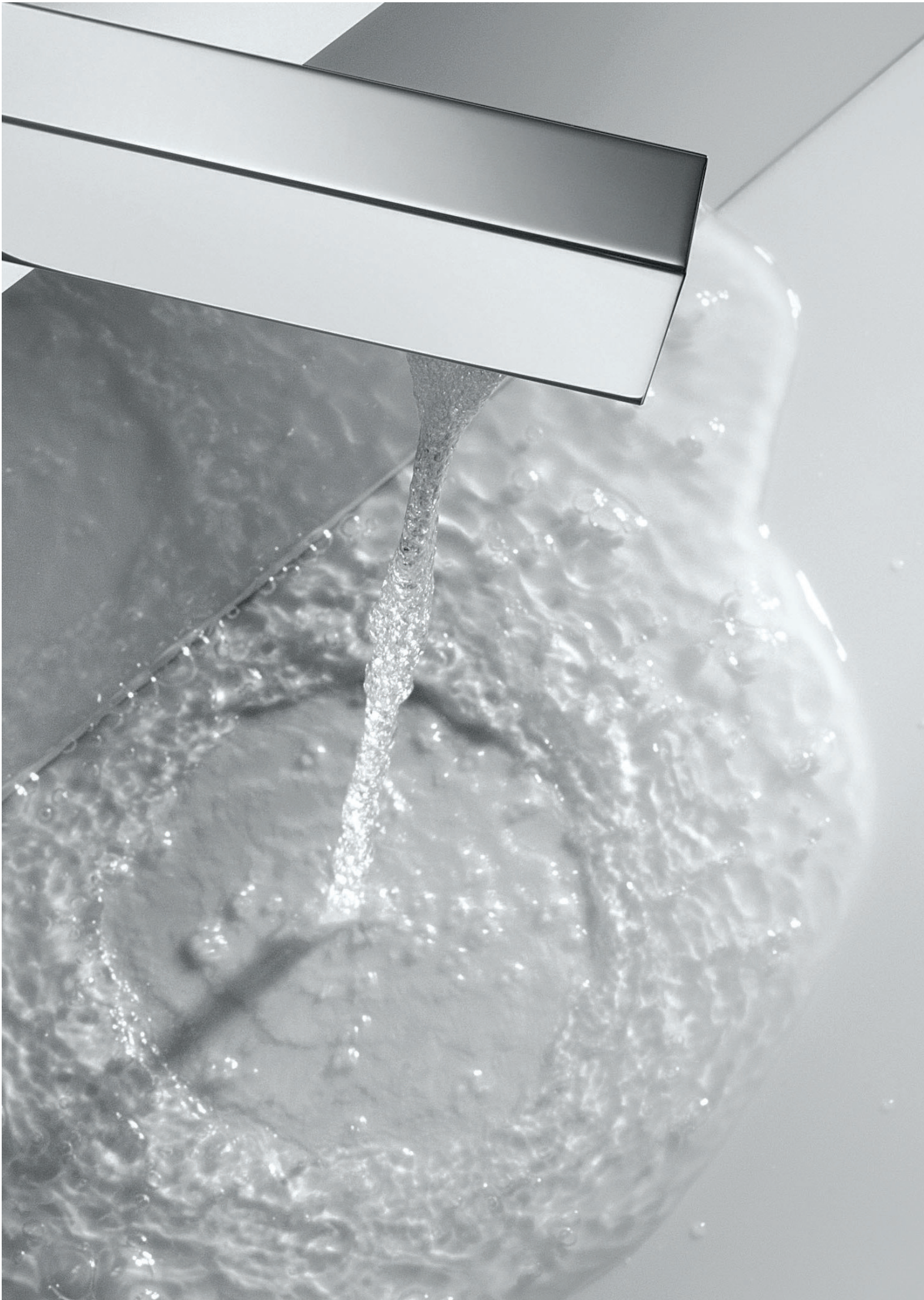


LINEA



"Simplicity is the
ultimate sophistication."
— Leonardo da Vinci





A design that maxes minimalism



Linea is an abstract, clean shape that is amazingly easy to use. Strikingly simple, yet thoroughly modern in design, its clean lines of classicism distill the experience into a minimal and elegant form.

In keeping with the current design trend of elimination and simplification, Linea's design encapsulates the minimalist sensibility without compromising on functionality.



A

The beauty of elimination



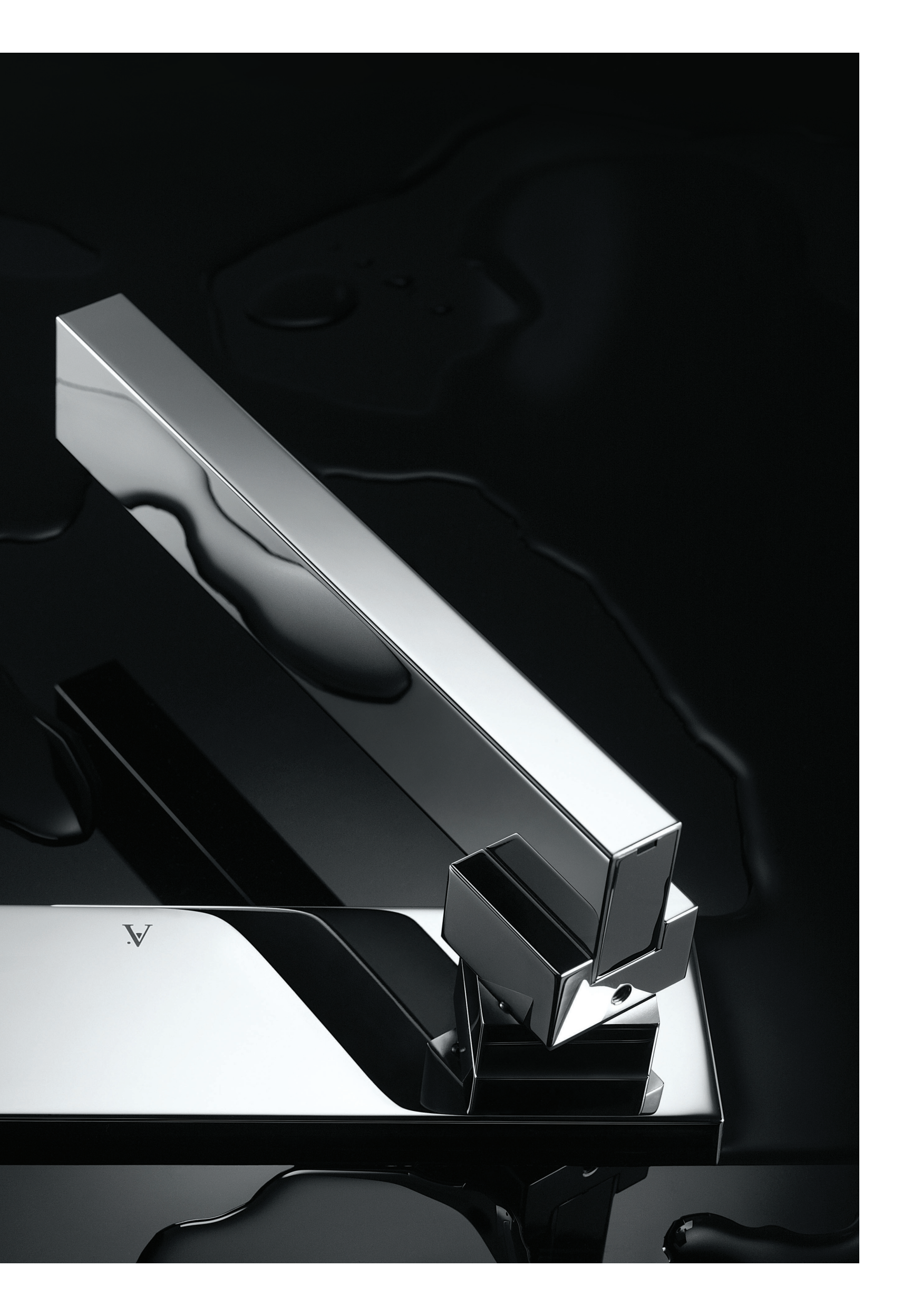
“Linea is the epitome of minimalism”,
says Parichay, head of the design
team at Jaquar group.

“It eliminates every inessential layer
between the user and the
experience of the product.”

India's first faucet to win Germany's prestigious iF Award

The iF product design award has been an internationally recognised accolade for great design for 60 years. The award is one of the oldest and most renowned design prizes in the world.



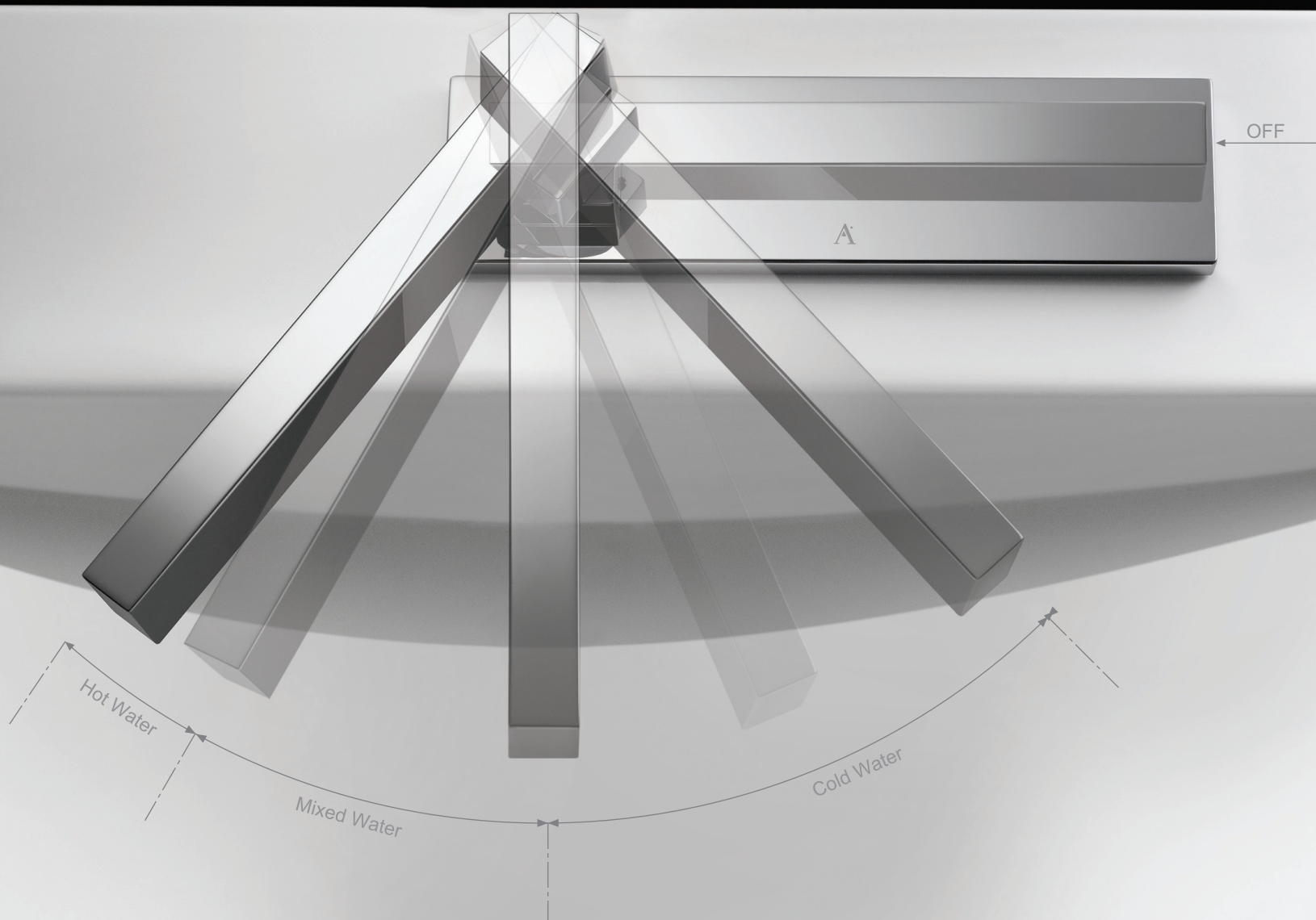




Simplicity that conceals brilliance

Linea's striking design feature is the graceful swinging motion of its spout, which also acts as its on/ off mechanism. Linea's multi-purpose spout pivots to form an arc that controls the temperature of water along its curve, allowing for a jet of cold, mixed or hot water at varying positions.

Linea's intelligent design prevents hot water from coming into contact with the chrome body - an anti-scalding feature that allows it to remain cool to touch.







Artize

craftsmanship in water